

LOGOVERT is a utility that converts your FRS backup files to standard CSV data files.

### **Installing Logover**

The **Logover.exe** download is a self-extracting zip file. Save the file to your PC, then double-click on the file to extract the installation files to a C:\LOGOVERT folder.

**Note: 64-bit Windows 7 users must run the Logover setup application as an Administrator. After extracting the Logover.exe file, go into the C:\LOGOVERT folder. Right-click on Setup.exe. Select Properties > Compatibility. Check the box for Run this program as an administrator, then click OK.**

Run the **Setup.exe** program. Logover will open when the installation is complete.

### **Using the Logover Utility**

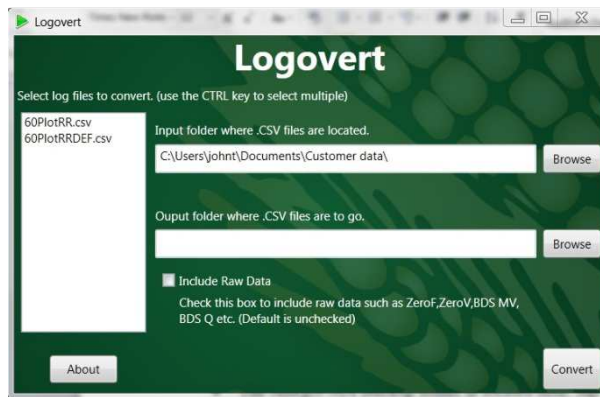
To use Logover, you first need to copy your FRS backup files from your Allegro to your PC. There are three easy ways to do this:

- Make a *Microsoft Activesync* or *Window Mobile Device Center* connection with your Allegro. Use the *Explore* (WinXP) or *Browse the contents of your device* (WMDC) function to copy and paste the files to a folder on your PC.
- Insert a Compact Flash data card and PCMCIA adapter into your Allegro. Use the *My Computer* (Allegro CX) or *File Scout* (Allegro MX) utility on the Allegro to copy the files to the data card. Remove the data card from your Allegro and insert it into a card reader on your PC. Copy the files from the card to a folder on your PC.
- If you have an Allegro MX, insert a USB thumb drive into the USB host port on the Allegro. Use the *File Scout* utility to transfer the backup files from the Allegro to the thumb drive. Remove the thumb drive and insert it into a USB port on your PC. Copy the files from the thumb drive to a folder on your PC.

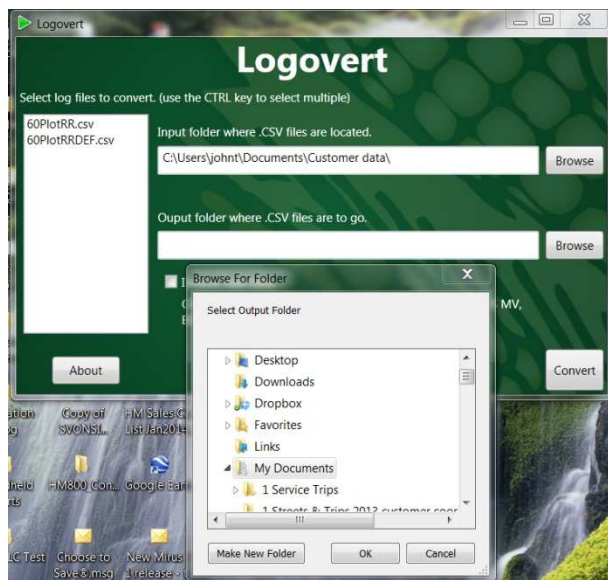
\*The Allegro CX backup files are found here: **C\_Drive \FRS\Backup**

\*The Allegro MX backup files are found here: **My Device\Program Files\FRS\Backup**

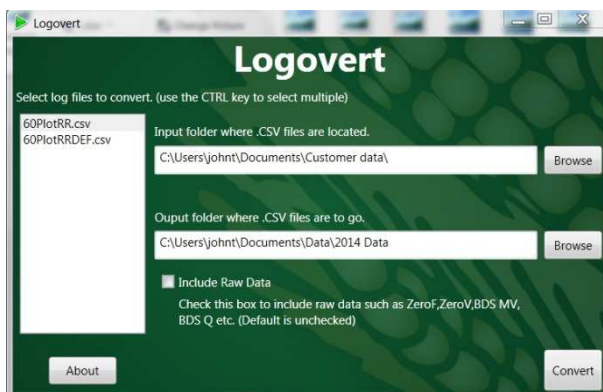
The LOGOVERT application has two browse buttons. Use the top button to browse to where your backup files are located on your PC (the “input” folder). The files will appear in the window on the left.



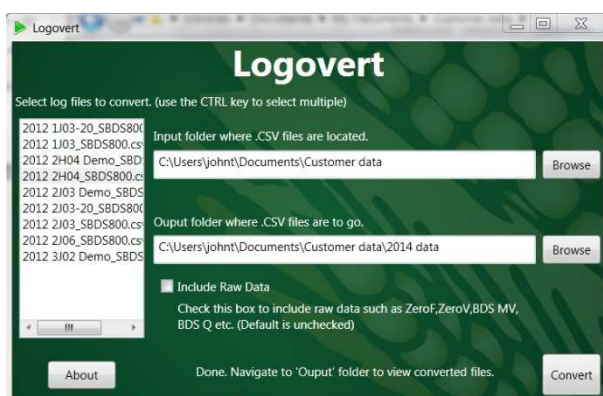
Use the second button to browse to the “output” folder where you want the converted data files to be sent. There is a button to **Make New Folder** if you need it.



In the window to the left, select the files that you want to convert. Click on the **Convert** button.



You will briefly see a green progress bar followed by: **Done. Navigate to ‘Output’ folder to view converted files**



The conversion is complete. You will find the converted files in the folder you selected for the file output.

When you want to find run the application again, you will find it in your PC's **Start > Programs > Harvest Master > FRS** folder. You can right-click on the Logoverrt icon and select Send to > Desktop as a shortcut.